

**PIVOT IRRIGATED CROPGROUND
2,812± ACRES ROCK COUNTY, NE**

LAND FOR SALE

BigIron
REALTY

[EXPERTS IN SELLING LAND]

PRICED AT
\$8,500,000

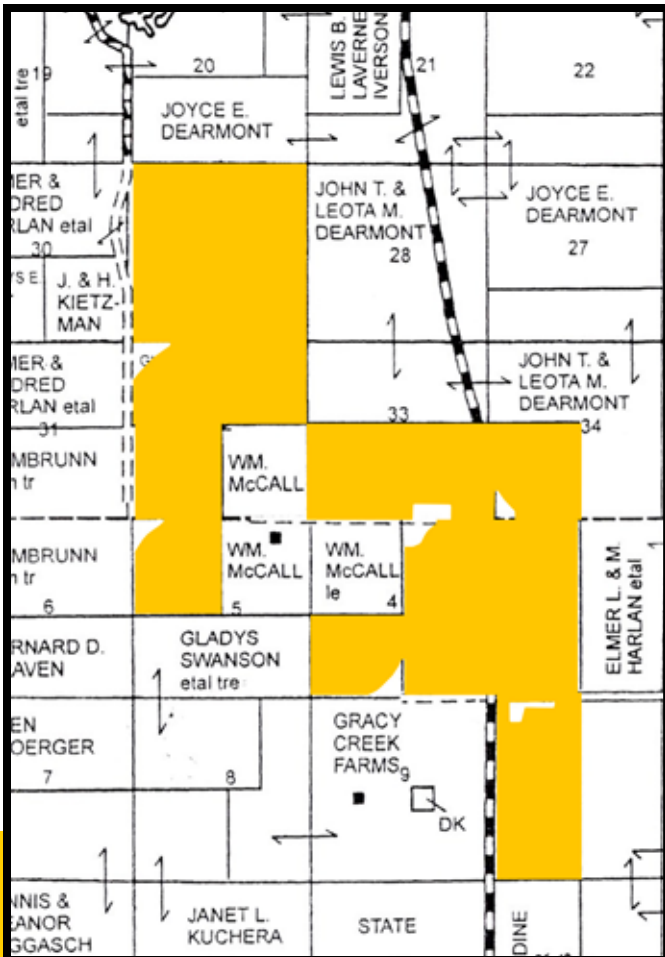
Seller: Farm Credit Services of America

»WE SELL FARMS«

Bryan Knox 402.305.4870 | Jerry Hoegh 402.694.9224

Explore the Property from Above

DRONE TOUR



Information:

Here is an opportunity to own 2,812 acres of productive pivot irrigated cropland in Rock County, NE. These 18 quarters have good access off of a paved state highway. All the pivots are electric. There is a 90' x 60' shed built in 2012. This property has ample grain storage including two 36,000 bushel bins, two 20,000 bushel bins, a wet bin, and a continuous flow dryer. There are numerous stock waterers, yards with 660 feet of inline bunks. There are grain markets in the area, including feed yards. Call us today to set up a showing or ask questions.

Location:

From Bassett, NE, at the intersection of Hwy 20 and 183, go south on Hwy 183 for 22 miles. The land is located on the east and west sides of the highway.

Legal:

Please visit www.bigironrealty.com for complete legal descriptions.

Taxes:

2019: \$55,655.84

FSA Data:

Visit www.bigironrealty.com for more information

Information was obtained from sources deemed reliable, but broker makes no guarantees as to accuracy. All prospective buyers are urged to fully inspect property and rely on their own conclusions.

Copyright 2020 BigIron Realty. All rights reserved.